

CLASSE A3 PLUS

FOREVER FUNCTIONAL BRAND ESSENTIAL STYLE MADE IN ITALY RELIABLE
VALUE SOLID DESIGN QUALITY REPUTATION MODERN TECHNOLOGY

A3:

"... ESSENTIAL QUALITY"

www.anthos.com

Stabilimento / Plant - Via Bicocca, 14/c - 40026 Imola - Bo (Italy) - tel. +39 0542 653441 - fax +39 054.

Sede legale ed amministrativa / Head Quarter - Cefla s.c. Via Selice Provinciale, 23/a - 40026 Imola - Bo (Italy) tel. +39 0542 653111 - fax +39 054.

Our policy of constant technological upgrading means that technical specifications may be subject to change without prior notice.

CLASSE A3 PLUS 



"...I'VE CHOSEN ANTHOS."



A3:

Classe A3 Plus is created here, at the heart of Europe's first dental unit production hub. Designed by the Anthos development team and produced in an ultra-modern facility, the Classe A3 Plus receives the same conscientious attention and is put through the same strict quality tests as all the units in the Anthos range. Based on a construction concept that ensures durability and reliability, Classe A3 Plus provides integrated instruments and systems plus outstanding ergonomics and flexibility: the essence of Anthos values and quality.

3

ANTHOS QUALITY

Anthos believes that it is the selection of materials according to their specific use that makes 'quality' so much more than a word. Quality of materials to provide strength, lasting cleanliness and solidity - yet also lightness and manageability to provide unmatched performance and style. Above all, every single material is specifically selected to maximise practicality and performance.



Structural parts such as the patient chair backrest are made of cast aluminium to increase strength and durability.

The ceramic cuspidor bowl offers excellent resistance to chemical corrosion while the removable cup and bowl fill unit is co-moulded with Nylon on the outside and Noryl® on the inside. Noryl® is a highly suitable material for dental unit water circuits and is DVGW-certified.



The use of extruded aluminium for the pantograph arm ensures both strength and lightness.

Instrument levers are made of Nylon to ensure they are able to withstand constant use.

The seamless co-moulded SKAI padding features fabric reinforcement to prevent tearing or warping. Chair base and unit body surfaces are made of special pre-polished plastics that are resistant to chemical aggression and accidental impact.

43

ERGONOMICS AND COMFORT

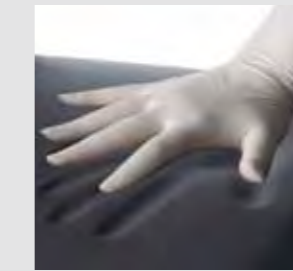
If any one part of the unit can be called 'crucial' - for both dentist and patient - then that part is the patient chair. This, then, is where the quest for quality begins. Structural strength, a shape that does not in any way encumber the operating area, a veritable 'cradle' for the patient and, around it, everything needed to enhance the working comfort of the dentist in terms of both postural ergonomics and visual comfort.



S9 ergonomic stool
As an alternative to conventional stools Anthos has developed the new S9 ergonomic stool. Suitable for people of different builds, it can be used by both dentist and assistant. Users can carry out wide-ranging adjustment of height, seat tilt, vertical/horizontal positioning and the tilt angle of the lumbar support, ensuring an optimal stool set-up for everyone whatever their stature.

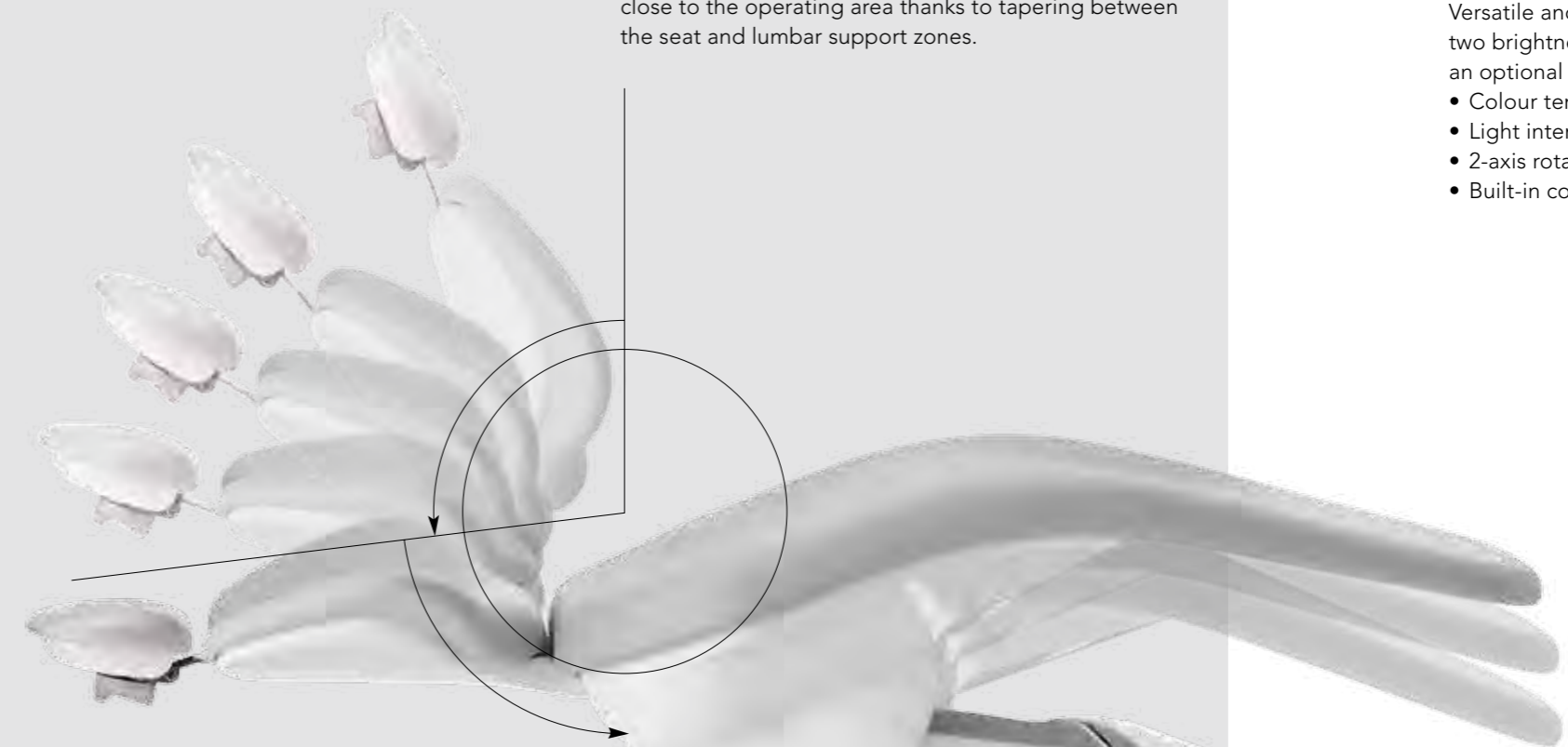


Wide or narrow backrest
Anthos provides a choice between two different backrest types.



Surgical padding
For even greater patient comfort there is an anatomically shaped padding option. This ensures maximum comfort, especially during prolonged treatment sessions.

Shaped chair with Trendelenburg movement
In addition to providing comfortable support for the patient, the chair lets medical personnel get comfortably close to the operating area thanks to tapering between the seat and lumbar support zones.



VENUS PLUS
High-performance operating light with protective front screen, removable handles for easy disinfection and potentiometer-controlled brightness.

- Colour temperature: 4,900 K
- Light intensity: from 8,000 to 35,000 Lux
- 3-axis rotation
- Built-in cooling system

VENUS
Versatile and practical, this operating light has two brightness settings and can be supplied with an optional frontal screen.

- Colour temperature: 4,900 K
- Light intensity: 8,000 / 22,500 Lux
- 2-axis rotation
- Built-in cooling

A3

READY FOR WORK – STRAIGHT AWAY

Anthos Classe A has been designed for worldwide use and every dentist with a Classe A is ready for work immediately – and even more so with the Classe A3 Plus, which features simple controls, arranged in a user-friendly way to provide essential, immediate control.



Patient chair and instrument controls are located in separate colour coded zones that can be accessed from both the dentist's and assistant's modules.

- 1 Patient chair controls
- 2 Direct main service / function keys
- 3 X-ray viewer



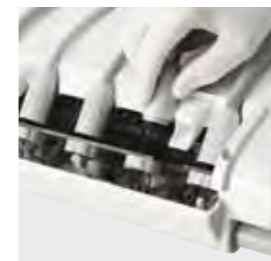
The multi-function foot control, available in 4 different ergonomic versions, has been designed and developed to ensure user comfort and provide a wide function range.

- Progressive instrument activation
- Immediate selection of sprays
- Chip Air, Chip Water
- Patient chair movement (except for version without joystick)
- Rinse and home position recall

A3

SELECTION OF INSTRUMENTS

Thanks to an extensive range of perfectly integrated instruments, Anthos dental units can be personalised with the very latest technology. The latest generation of scalers, a curing light in a class of its own and a high-power induction micromotor are all in perfect keeping with the tried and tested Anthos brand quality and the Anthos philosophy of maximised practicality.



On the Classe A3 Plus International the dentist can, where a sixth instrument is requested, choose between intraoral video camera and curing light. Moreover, it is also possible to add a large transthoracic tray holder module and the X-ray viewer for panoramic images.



Anthos ultrasound scaler
The u-PZ6 scalers are suitable for supra- and subgingival prophylaxis and more invasive periodontic tasks. Thanks to the advanced control electronics, they are also used for the preparation of small cavities and in endodontic root canal cleaning techniques.



Anthos Micromotor
Light and compact, with a 1,000 – 4,000 rpm range, the i-MMr belongs to a new generation of induction micromotors. Delivered torque – up to 3 Ncm – allows users to carry out both conservative dentistry and orthodontics, minimising hand fatigue thanks to low weight and vibration-free performance.

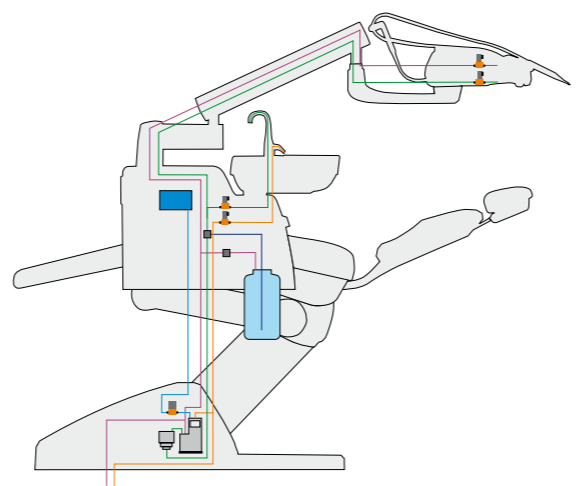
A3

ALL-ROUND SAFETY WITH THE ANTHOS HYGIENE SYSTEM

The dental team can count on the cutting-edge Anthos hygiene system at all times. Classe A3 Plus has been designed to ensure maintenance of hygienic conditions inside both dental unit and workplace: active devices and special design features prevent contamination risks and are in place to ensure secure protection.



The Classe A3 Plus can also be personalised with an independent distilled water feed tank in compliance with strict hygiene standards. The optional WHE system ensures non-proliferation of bacteria inside water circuits and the cup fill unit via the addition of H₂O₂, thus preventing the formation of biofilm. EN 1717-compliant, the WHE system provides good protection against backflow contamination by the water used on the dental unit. The device carries the German DVGW certification mark.



A large double-chamber filter ensures greater suction system efficiency.



Removable handpiece holder and rapid coupling instrument tubing for simplified instrument changeover.



A3: ACTIVE HYGIENE SYSTEMS



WHE
WATER HYGIENISATION
EQUIPMENT

Automatic system that ensures permanent disinfection of the spray and cup fill circuits via the addition of H₂O₂, which exerts a bacteriostatic effect. The system has an EN1717-compliant Type A inlet air gap separation device to prevent contamination of mains water.



DISTILLED WATER TANK

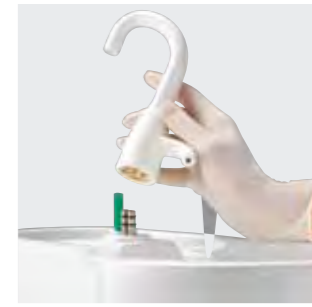
The independent feed tank can hold 1.7 litres and is incorporated on the unit body. A second tank is provided to allow manual sanitisation of the water circuits.



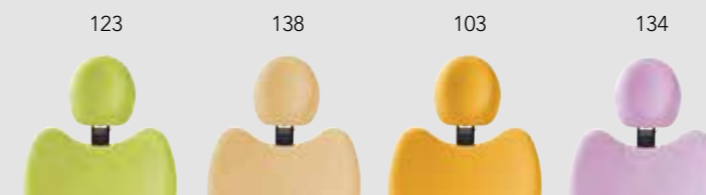
O.D.R.
ANTI-RETRACTION DEVICE

The O.D.R. anti-retraction device on dynamic instruments blocks any fluid return and thus prevents backflow contamination of spray water circuits.

A3: PASSIVE HYGIENE



- Fully removable front cover on instrument module
- Autoclaveable silicon instrument support mat
- Interchangeable-autoclaveable stainless steel tray holder module
- Cup and bowl fill unit is removable to aid disinfection
- Ceramic cuspidor bowl, resistant to chemical corrosion
- Touch key controls
- Removable cannula guides
- Cannula ends can be autoclaved
- Seamless SKAI padding, easily removable for sanitisation purposes
- Dentist's module movement handles can be removed and cold-disinfected



Standard upholstery colours

102 Atlantic blue	135 Venetian red	133 Madagascar green
106 Mediterranean blue	115 Scottish salmon	101 Caribbean green
113 Pacific blue	103 Nevada yellow	137 Satin silver
136 Indian blue	138 Namib beige	121 Anthracite grey
134 Japanese wisteria	123 Polynesian green	130 Graphite black

Surgical padding upholstery colours (*)

197 Caribbean green
198 Atlantic blue
196 Mediterranean blue
195 Scottish salmon
199 Anthracite grey

A3: INTEGRATED INSTRUMENTS AND ACCESSORIES



i-MMr MICROMOTOR

Versatile high performance induction micromotor at the very top of its category, perfectly integrated with the electronics of the dental unit and with full memory-function control. Extremely compact, suitable for conservative and prosthetic dentistry. Maximum torque 3 Ncm.



U-PZ ULTRASOUND SCALERS

Scalers suitable for sovragingival prophylaxis and more invasive periodontic tasks. Thanks to the advanced control electronics, they are also used for the preparation of small cavities and in endodontic root canal cleaning techniques.



SILENT POWER TURBINES

A range of turbines constructed with ceramic ball bearings; silent and powerful, they can be thermo-disinfected and sterilised in an autoclave.



T-LED CURING LIGHT

Exclusive patented instrument featuring programmes and accessories for every possible need. Light and articulated, its 180° rotation allows it to be used in both direct and angular modes.

A3: MULTIMEDIA AND X-RAY DEVICES



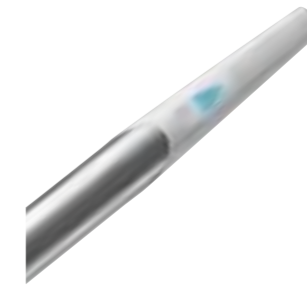
RXDC HYPERSPHERE

High-frequency X-ray unit incorporated on the dental unit; features a wireless control device and a 'spherical coupling' positioning system with an automatic lock/release mechanism.



ZEN-X

X-ray sensor incorporated on the dentist's module, fully controlled by the dental unit's multimedia software. Precision diagnostics at the touch of a key and outstanding comfort thanks to specially designed shaping that adapts to the oral cavity effortlessly.



C-U2 INTRAORAL VIDEO CAMERA

C-U2 features Progressive Scan technology and has its control electronics incorporated in the dental unit; the software carries out real-time adjustment of all parameters for optimal imaging, ensuring that all the dentist has to do is frame the area of interest.



C-U2 PRO INTRAORAL VIDEO CAMERA

Highly sophisticated PRO optics provide outstanding image quality and three different focussing settings. Progressive Scan technology allows the capture of high definition images.



MEDICAL VIEW

- Certified Medical Device as per CE 93/42
- Easily sanitised
- Optical glass screen with sealed edges
- PC and Video input



STOP VACUUM

Exerting pressure on the base of the patient chair at any time causes temporary interruption of suction.

CONVENTIONAL STOOLS

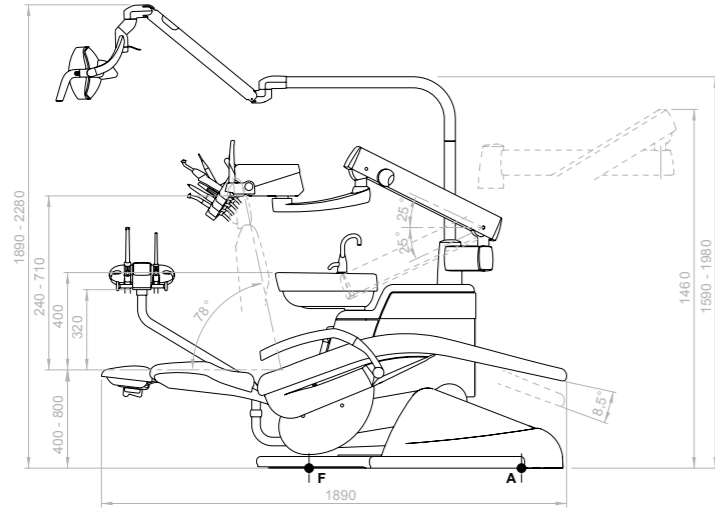
Dentist's stool featuring adjustable height and backrest tilt. Height-adjustable assistant's stool with fold-down backrest/armrest. Extension kit and footrest ring available as optionals.



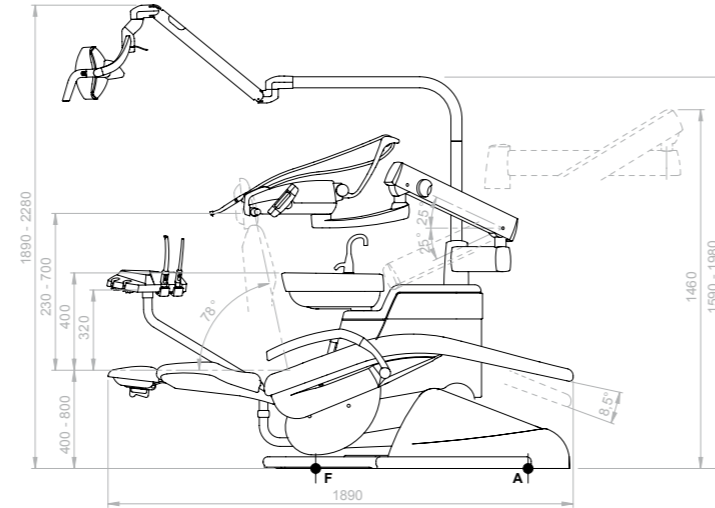
A3:



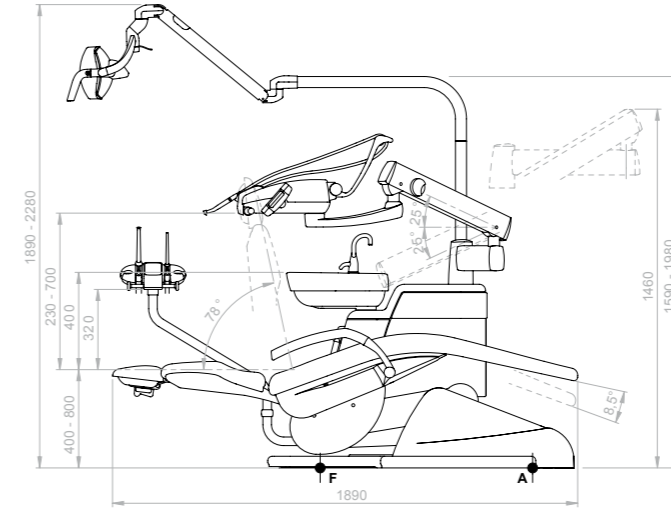
Classe A3 Plus
International



Classe A3 Plus
Continental



Classe A3 Plus
Short Arm 50



Classe A3 Plus
Short Arm 26

